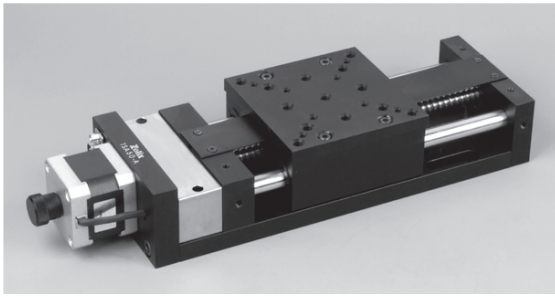


Produktinformation

Positioniertechnik

Dr. Meierling

TSA: Motorisierter Lineartisch

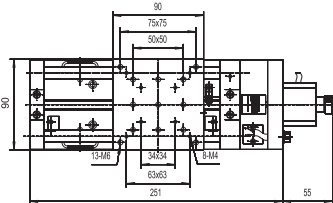
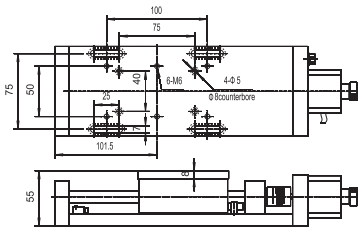


Kugellagerter Lineartisch für Anwendungen mit moderater Belastung und hoher Präzision

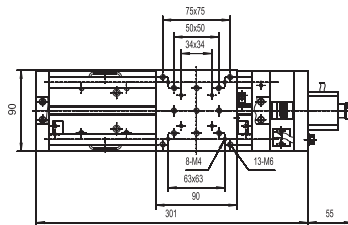
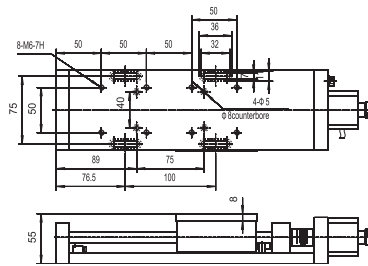
- Endschalter zum Schutz
- Bohrungen im Raster zur einfachen Aufnahme
- Handrad zur manuellen Justage

Model	TSA50	TSA100	TSA150	TSA200
Stellweg (mm)	50	100	150	200
Spindelsteigung (mm)	4			
Auflösung (μm)	1.25		2.5	
Max Geschwindigkeit (mm/s)	20		40	
Wiederholbarkeit (μm)	< 5			
Stepper Motor (Winkel)	42 (0.9°)			42 (1.8°)
Strom (A)	1.7			
Maximale Belastbarkeit (kg)	15		10	7
Eigengewicht (kg)	2.75	3	3.3	3.8

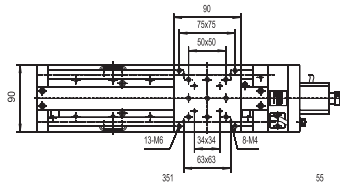
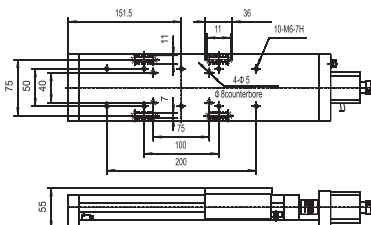
Abmessungen:



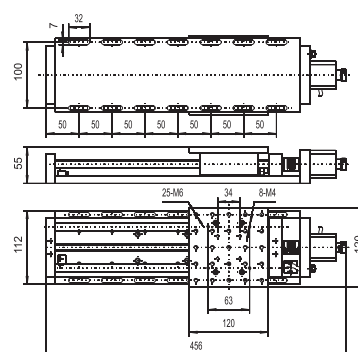
TSA50



TSA100



TSA150



TSA200